



Innovation
that excites

NISSAN INTELLIGENT MOBILITY

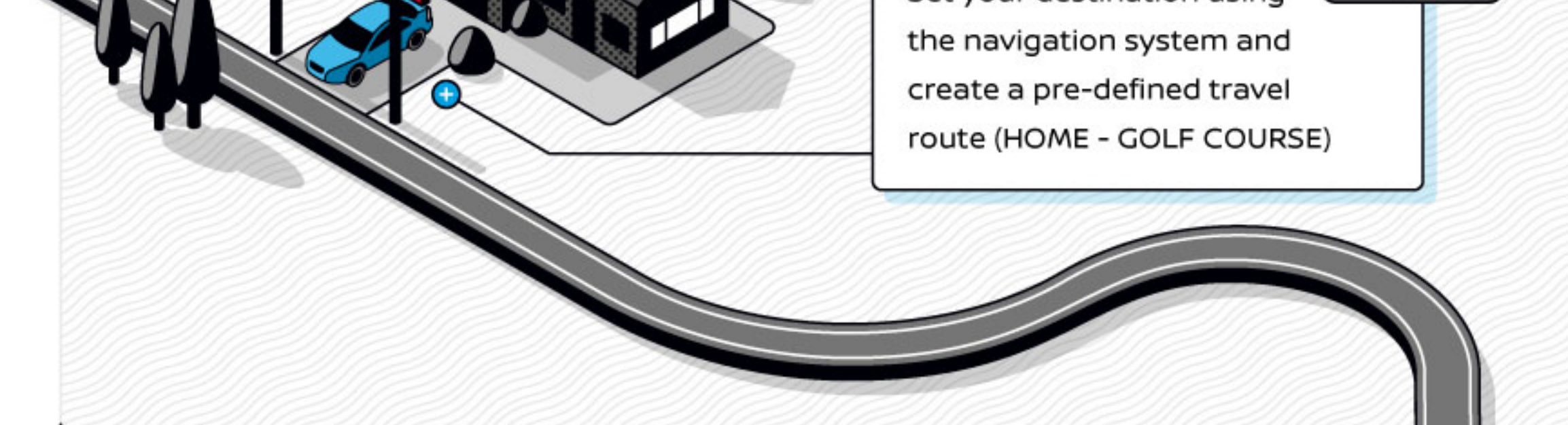
Enhance your journey with ProPILOT 2.0



Does driving on the highway feel long and tiring?
Do you wish that your drive was simplified and less stressful?

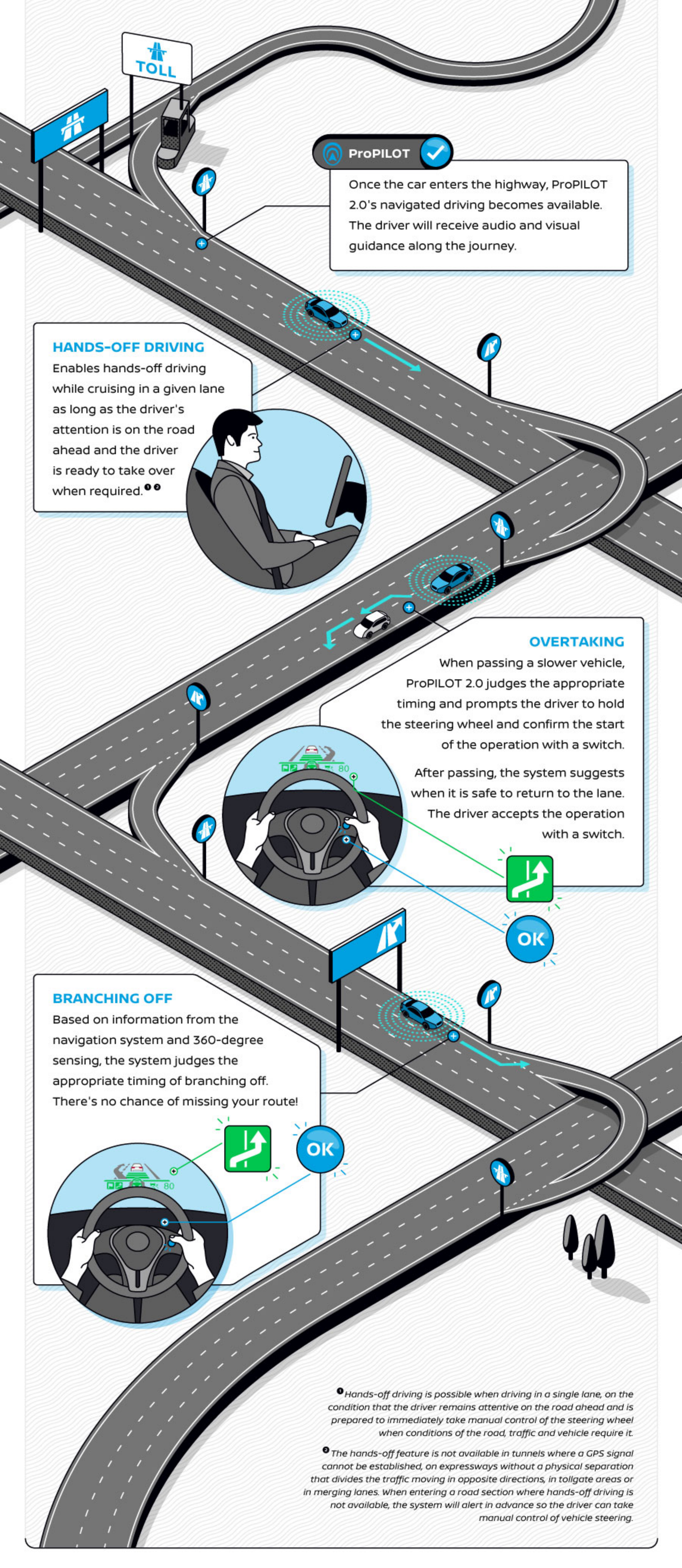
Nissan's ProPILOT 2.0 helps make your journey more relaxing and enjoyable.

Expanding on the award-winning ProPILOT system, ProPILOT 2.0 is a world's first in driver assistance technology, combining navigated highway driving with hands-off single-lane driving capabilities.



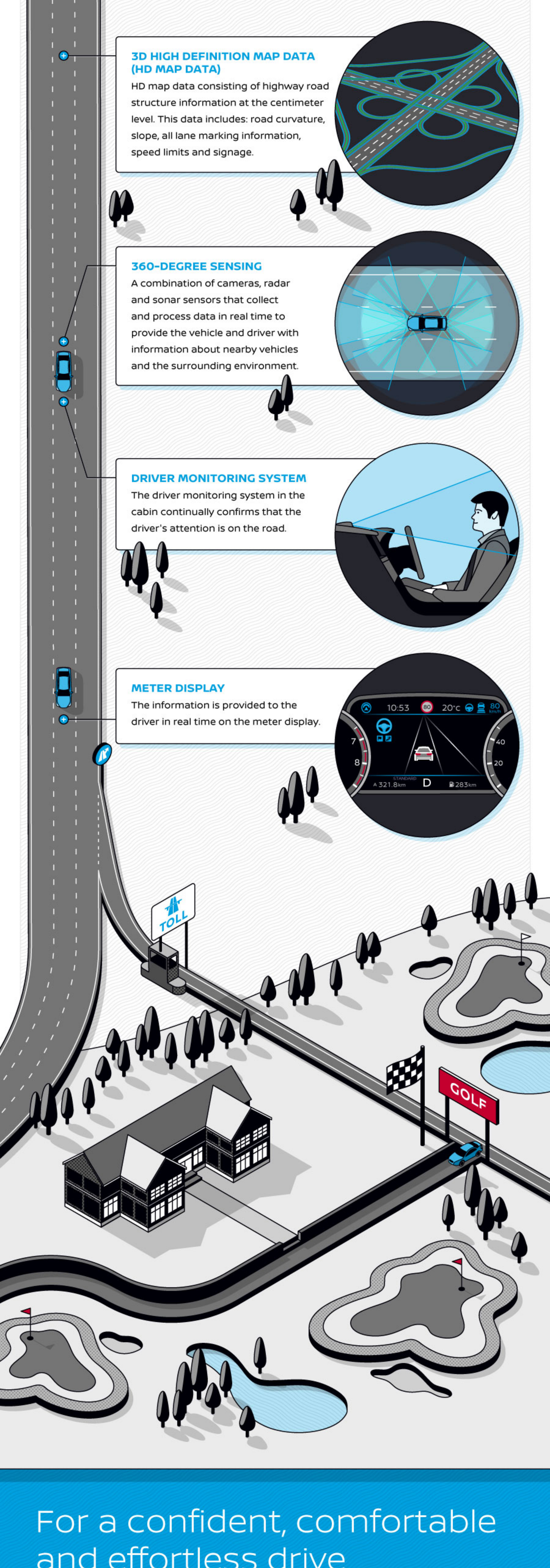
How does ProPILOT 2.0 support your journey?

Upon activation of the predefined route, ProPILOT 2.0 will assist with traveling on a multi-lane highway until reaching the highway exit.



For more confident driving and a comfortable journey

ProPILOT 2.0 is made possible by a suite of advanced technologies to help enhance your driving experience and journey.



For a confident, comfortable and effortless drive